



1

---

---

---

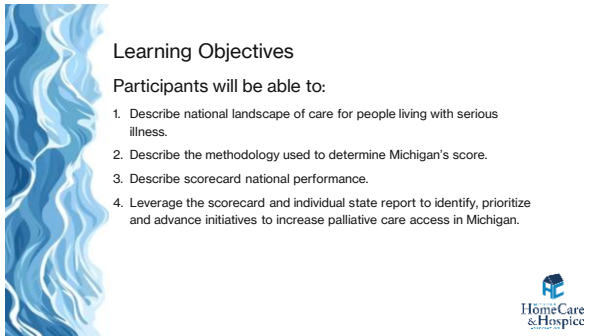
---

---

---

---

---



2

---

---

---

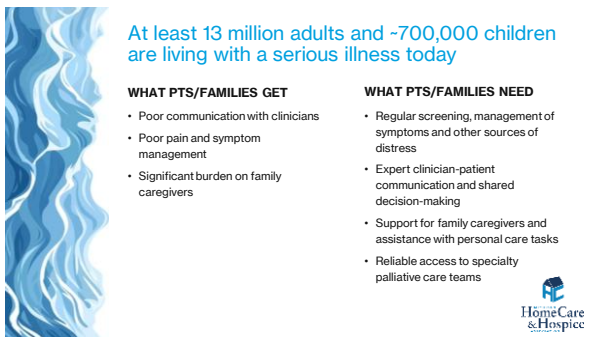
---

---

---

---

---



3

---

---

---

---

---

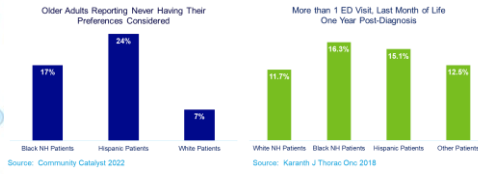
---

---

---



Care Experiences for People Living with Serious Illness are Inequitable



Source: Community Catalyst 2022

Source: Karanth J Thorax Onc 2018



4

---

---

---

---

---

---

---

---



Palliative care improves quality...



5

---

---

---

---

---

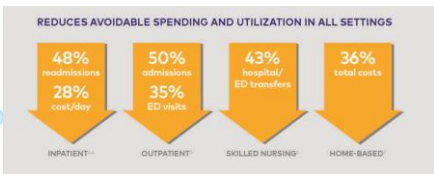
---

---

---



...and lowers cost



6

---

---

---

---

---

---

---

---



### The Serious Illness Scorecard Builds on the prior CAPC "State by State Report Card"



- The Report Card measured prevalence of hospital-based palliative care programs in each state
- Four editions between 2006 and 2019
- Inpatient palliative care access had grown dramatically, but is now leveling off
- Palliative care now extends well beyond the 4 hospital walls
- The broader health care system continues to adopt palliative care principles and practices



7

---

---

---

---

---

---

---

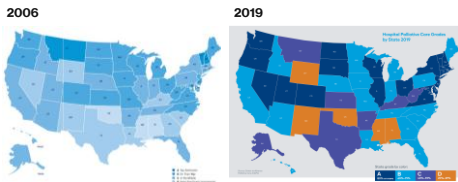
---

---

---



### Significant Growth in the Field



8

---

---

---

---

---

---

---

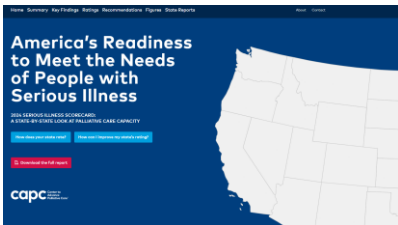
---

---

---



CAPC evaluated each state's capacity to deliver high-quality care to people with serious illness



[scorecard.capc.org](http://scorecard.capc.org)



9

---

---

---

---

---

---

---

---

---

---

## The Serious Illness Scorecard Uses Ten Variables Across Five Domains

<b>Specialty Palliative Care Availability</b> <ul style="list-style-type: none"> <li>Proportion of states' hospitals (&gt; 50 beds) with self-reported palliative care program or unit</li> <li>Count of states' certified hospice and palliative care professionals per 100,000 population</li> </ul>	<b>Payment for Palliative Care Services</b> <ul style="list-style-type: none"> <li>Existence of state legislation or regulation mandating payments for specialty palliative care (adult or pediatric)</li> <li>Existence of unique services for enrollees with serious illness at the state's largest health insurance provider</li> </ul>	<b>Structured Champions, Advocacy, and Support</b> <ul style="list-style-type: none"> <li>Existence of active state palliative care advisory council</li> <li>Existence of regional, state, or local palliative care coalition (adult or pediatric)</li> </ul>	<b>Building Skills Outside Specialty Palliative Care</b> <ul style="list-style-type: none"> <li>Existence of relevant medical and/or nursing continuing education requirements</li> <li>Board of clinicians who completed at least one CME course per 10,000 clinicians in the state</li> </ul>	<b>Foundation for Functional and Caregiver Support</b> <ul style="list-style-type: none"> <li>Extra services within Medicaid Waiver for Children with Serious Illness</li> <li>ANPP Long-Term Services and Supports (LTSS) Scorecard ranking</li> </ul>
--	--	--	---	---



10

---

---

---

---

---

---

---

---

---

---



## How Michigan Performed in 2024



11

---

---

---

---

---

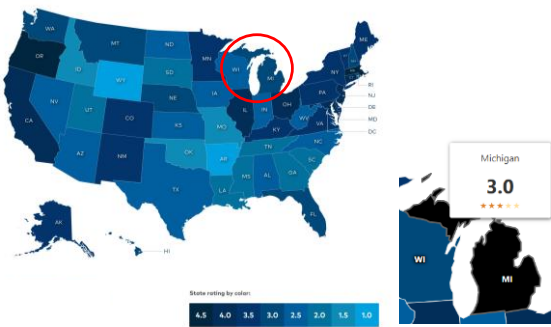
---

---

---

---

---



12

---

---

---

---

---

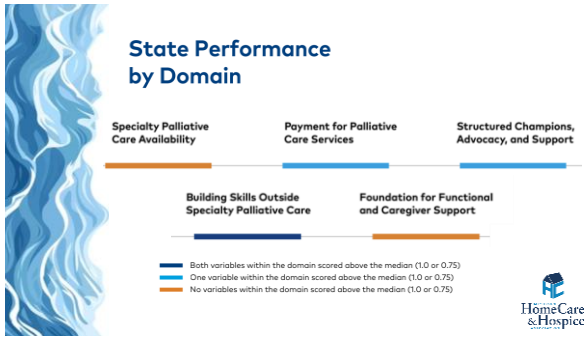
---

---

---

---

---



13

---

---

---

---

---

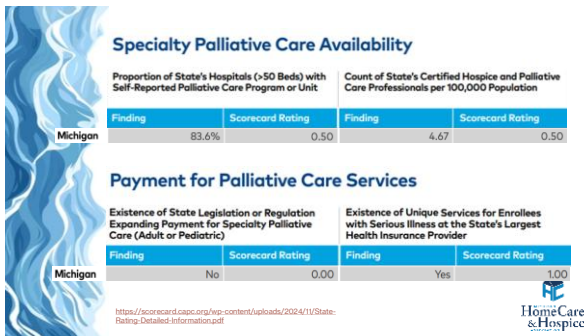
---

---

---

---

---



14

---

---

---

---

---

---

---

---

---

---



15

---

---

---

---

---

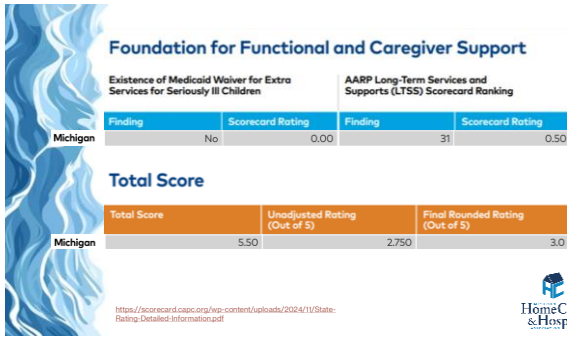
---

---

---

---

---



16

---

---

---

---

---

---

---

---

---

---



17

---

---

---

---

---

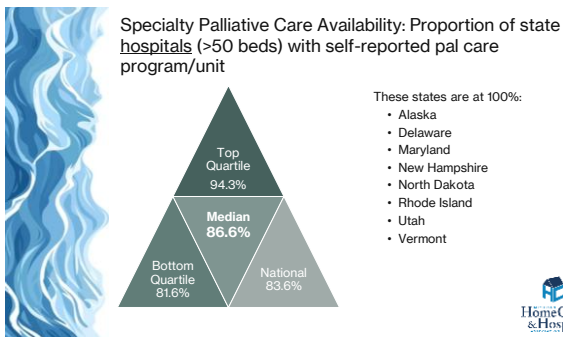
---

---

---

---

---



18

---

---

---

---

---

---

---

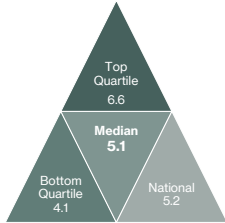
---

---

---



### Specialty Palliative Care Availability: Prevalence of HPM Certified Professionals\* per 100,000 Population



- Highest Availability: Rhode Island
- Lowest: Oklahoma
- Vermont has the highest availability of *prescribers* per 100,000 population (with Wyoming at the lowest)

\* Includes: MD, APRN, RN, Ped RN, and SW



19

---

---

---

---

---

---

---

---

---

---



### Payment for Palliative Care (Primary or Specialty)

#### Legislation or regulation specifying payment for specialty pal care

- Information based on LegiScan search and verified through state and CMS public information
- Currently, only 13 states have such laws/regs
- It's not only Medicaid. IL requires all its commercial insurers to cover pal care

#### Specific programs for enrollees with SI at state's largest health insurer

- Largest state health insurer taken from Becker's June 2023 listing
- Currently, 23 state's insurers have such programs
- It's not just payment for specialty palliative care services; programs like CVS/Aetna provide specialized nurse care management



20

---

---

---

---

---

---

---

---

---

---



### Structures for Champions

10 states with **both** an active Palliative Care Advisory Council and a Palliative Care Coalition (Adult and/or Peds):

- AL • MN
- IL • MT
- LA • NJ
- MD • OR
- MA • TX



21

---

---

---

---

---

---

---

---

---

---



### Relevant Medical and/or Nursing CE Reqs



- Topics:
- Palliative Care
  - Geriatrics
  - Pain Management
  - Dementia/Alzheimer's
  - End of Life



22

---

---

---

---

---

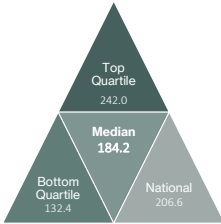
---

---

---



### Prevalence of clinicians who completed at least one CAPC course, per 10,000 clinicians in state



- Highest prevalence of CAPC courses:
- Michigan (563.6)
  - Oregon (429.3)
  - Maine (395.7)
  - Nebraska (382.2)
  - Iowa (352.8)
  - Maryland (349.9)
  - New Jersey (331.9)
  - New York (327.9)
  - Washington (275.5)
  - Pennsylvania (261.6)
- Lowest prevalence of CAPC courses:  
Wyoming



23

---

---

---

---

---

---

---

---



### Foundation for Functional and Caregiver Support



- 32 states have Medicaid waivers for children with serious illness that go 'beyond' home-based care
- E.g., Respite care and sibling counseling in Illinois
- AARP LTSS Ranking considers: range of choices; safety/quality; support for family caregivers, and affordability programs for those above Medicaid limits
- E.g., Caregiver tax credits in Georgia



24

---

---

---

---

---

---

---

---



25

---

---

---

---

---

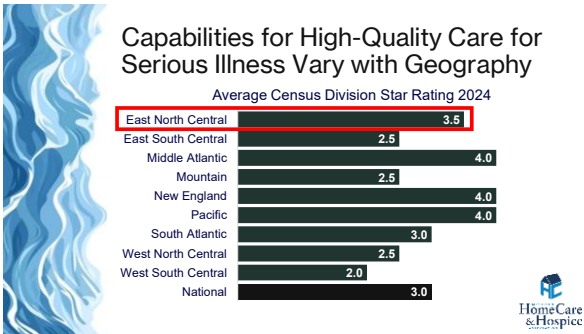
---

---

---

---

---



26

---

---

---

---

---

---

---

---

---

---

Now What?  
 Suggestions to  
 Strengthen  
 Capacity

27

---

---

---

---

---

---

---

---

---

---







### Success Factors

- Meaningful coordination across all interested parties
- Prioritize! What is the most pressing problem to solve?
- Understand current resources
  - Some states collect information on palliative care programs and specialists via survey
  - CAPC and NASHP have useful resources – no need to reinvent the wheel
- Plan for implementation



34

---

---

---

---

---

---

---

---

---

---



### Michigan Oncology Quality Consortium (MOQC)

- Pilot for a six-month certificate program to strengthen clinicians' core palliative care skills
- Curriculum emphasized practical training in:
  - Pain and symptom management
  - Effective communication and shared decision-making
  - Support for patients' families and caregivers
- Participants from across the state in underserved areas, including tribal communities
- The 2025 inaugural cohort showed significant gains in comfort and knowledge across all cancer care competencies, with 100% of participants recommending the program

<https://moqc.org/initiatives/clinical/palliativecare-and-hospice/>



35

---

---

---

---

---

---

---

---

---

---



### Need Input or Ideas? Join the State Palliative Care Forum



Email [paymentandpolicy@capc.org](mailto:paymentandpolicy@capc.org) to join



36

---

---

---

---

---

---

---

---

---

---



### COMING SOON(ish) – the Inventory



37

---

---

---

---

---

---

---

---



### ON DEMAND WEBINARS BRIEFING: America's Readiness to Meet the Needs of People with Serious Illness: The 2024 Serious Illness Scorecard

Recorded December 10, 2024  
📺 X in 53



#### Presenters



**Beth Brown, MD**  
Chief Executive Officer, Center for Advanced Palliative Care



**Alan Davis, MD**  
Chief, Medication Transformation Office



**Mark Scola, MD**  
Associate Clinical Professor and Lead, Palliative Care



**Rachel Weiss, MD**  
Professor of Medicine, Director of Palliative Care



<https://www.ccapc.org/events/recorded-webinars/briefing-americas-readiness-to-meet-the-needs-of-people-with-serious-illness-the-2024-serious-illness-scorecard/>

38

---

---

---

---

---

---

---

---



### Links and Contacts

- <https://scorecard.ccapc.org/>
- <https://www.ccapc.org/toolkits/state-policy-in-palliative-care/>
- <https://www.ccapc.org/toolkits/federal-policy-in-palliative-care/>
- <https://www.ccapc.org/blog/serious-illness-scorecard/>
- [https://docs.google.com/document/d/1j4g3rb2UZzNZqOffNOeqZxSCalcxyx\\_79gZTL24jp\\_g/edit?usp=sharing](https://docs.google.com/document/d/1j4g3rb2UZzNZqOffNOeqZxSCalcxyx_79gZTL24jp_g/edit?usp=sharing)

- Questions/Comments?
- [stacie.sinclair@mssm.edu](mailto:stacie.sinclair@mssm.edu)



39

---

---

---

---

---

---

---

---



40

---

---

---

---

---

---

---